

# Improving seasonal streamflow forecasts by incorporating soil moisture data

Briana M. Wyatt<sup>1\*</sup>, Tyson E. Ochsner<sup>1</sup>, Erik S. Krueger<sup>1</sup>, and Eric T. Jones<sup>2</sup>

<sup>1</sup>Department of Plant and Soil Sciences, Oklahoma State University

<sup>2</sup>National Weather Service Arkansas-Red River Forecast Center, Tulsa, Oklahoma



DEPARTMENT OF  
Plant & Soil  
Sciences



# Surface water vulnerability

- Growing water demands
- Increasingly variable climate
- Low streamflow forecast accuracy
- Limited streamflow forecast availability

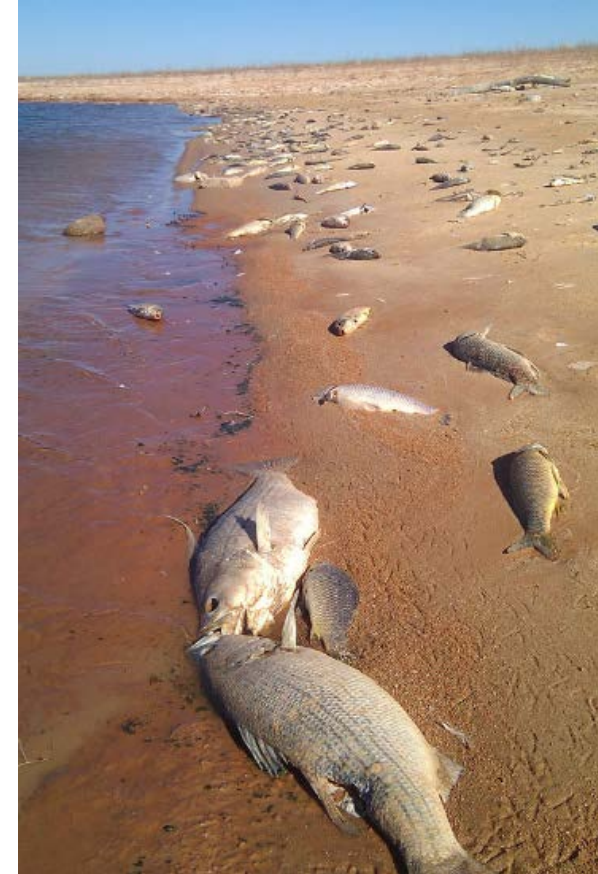


Figure 1. Fish kill at Altus-Lugert Lake in 2013 resulting from a golden algae bloom caused by prolonged drought conditions and increasing upstream groundwater use.

# Current forecasting methods in Oklahoma

- National Weather Service (NWS) provides river flood forecasts at  $\leq 6$ -day lead times
- Experimental long-range forecast gives probability of flooding for next two months
- No publicly available information on future streamflow volumes

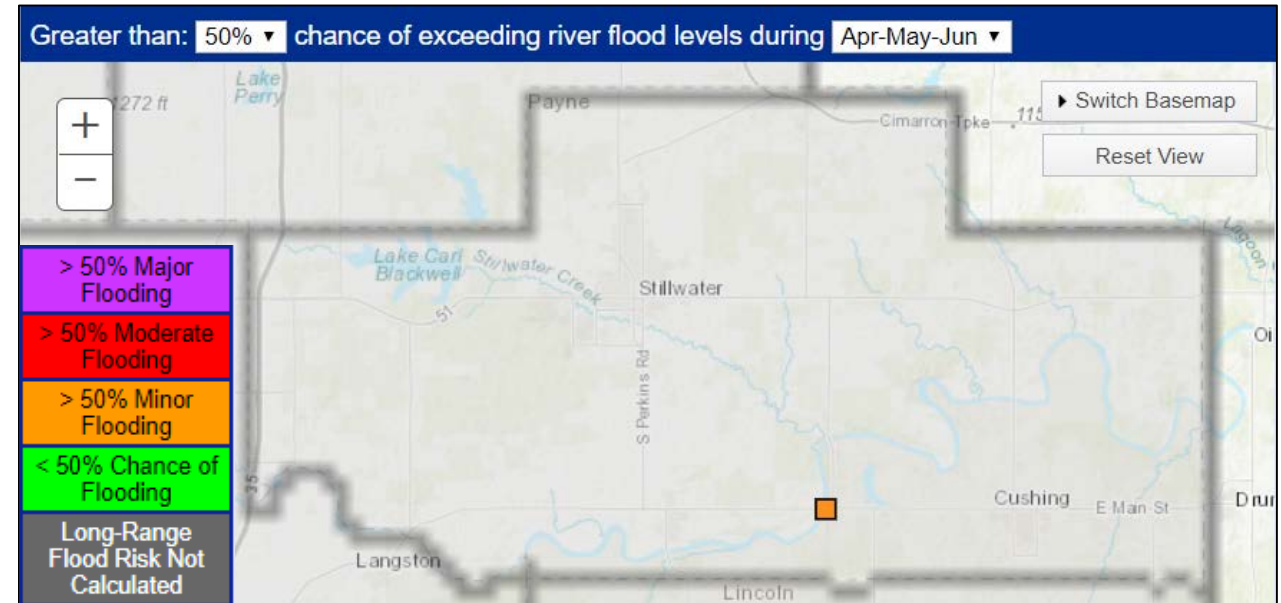


Figure 2. Screenshot of experimental NWS Arkansas Red-Basin River Forecast Center exceedance probability forecast for April-June 2019 for the Cimarron River in Payne County, OK.

# Current forecasting methods in Western U.S.

- Made by Natural Resources Conservation Service (NRCS) in snow-dominated Western U.S.
- Principle components analysis and regression (PCR)
- Linear combination(s) of predictor variable(s) used to estimate response variable

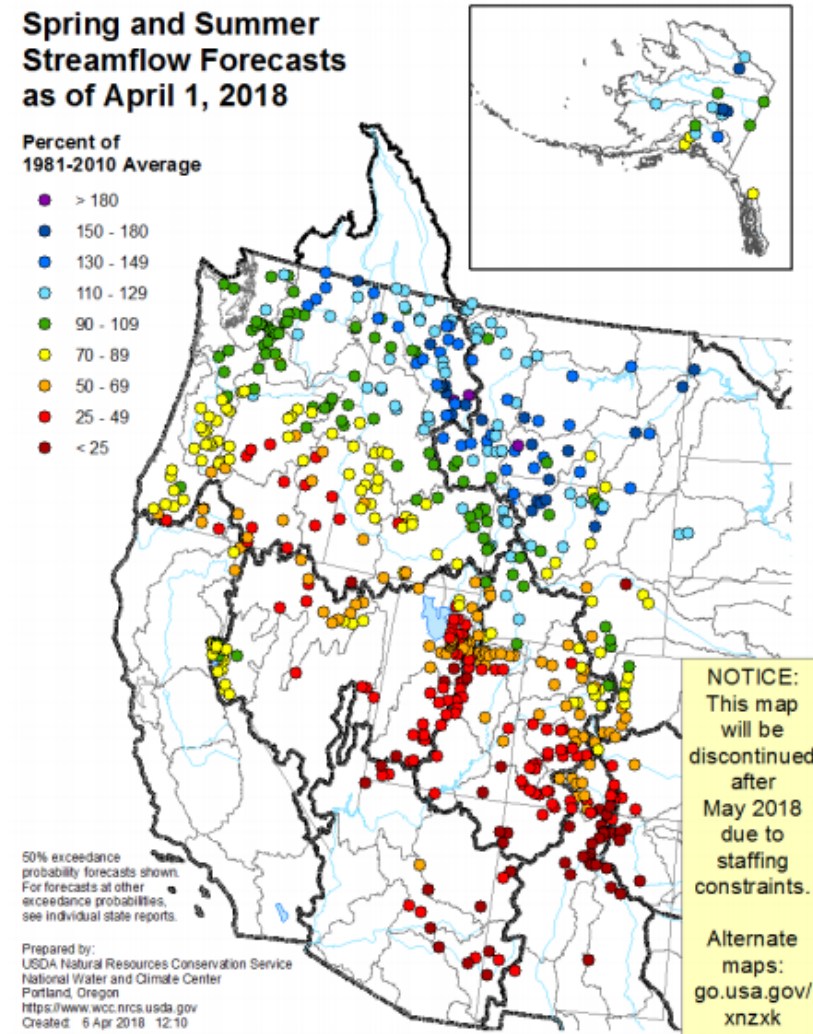


Figure 3. Locations of operational streamflow forecasts made by the NRCS in the Western U.S.

# Research Objective

The objective of this research is to determine the extent to which soil moisture data can improve seasonal streamflow forecasts in regions where rainfall is the primary driver of surface runoff.

# Fort Cobb Watershed

- 786 km<sup>2</sup> area
- 816 mm yr<sup>-1</sup> precipitation
- Sandy clay and sandy loam
- >90% agricultural land
- Fort Cobb Lake
  - Municipal water supply for Chickasha and Anadarko

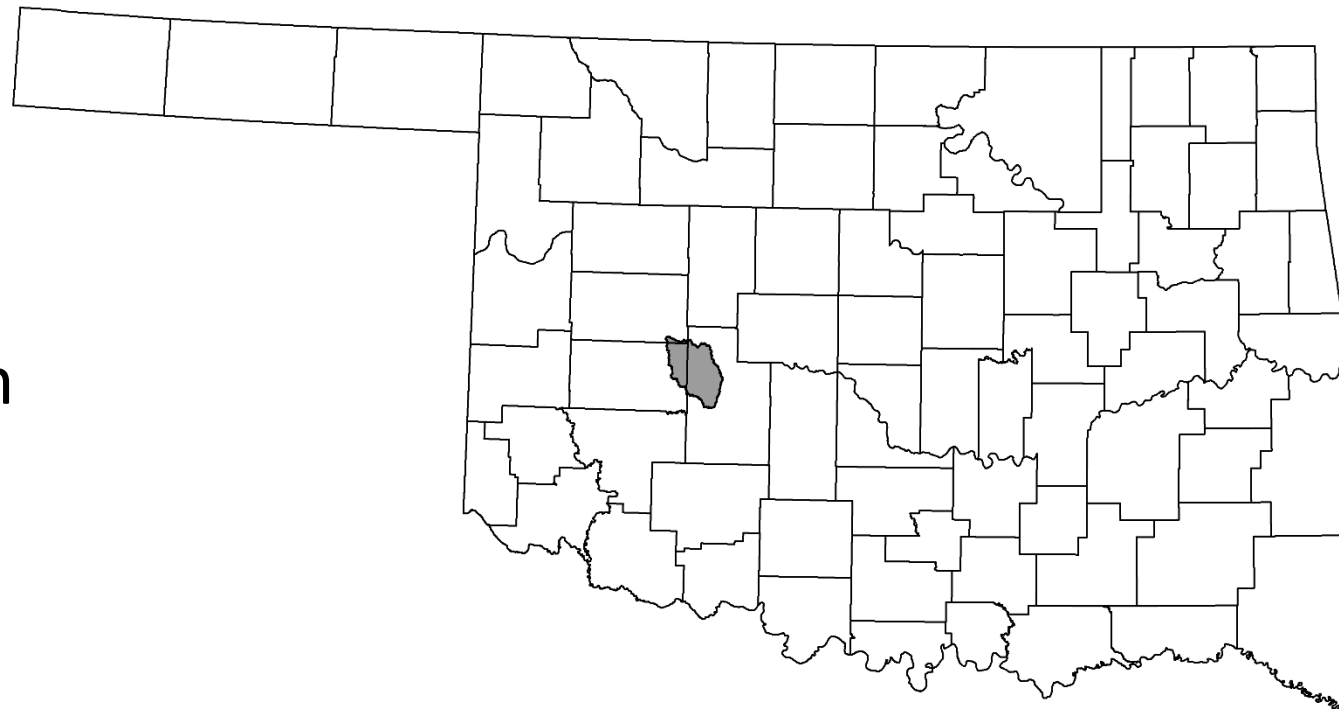


Figure 4. Location of Fort Cobb watershed.

# Fort Cobb Micronet

- 15 stations, 2005-present
- Precipitation and soil moisture
  - Soil moisture sensors at 5, 25, and 45 cm
- Daily change in storage at Fort Cobb reservoir
  - U.S. Army Corps of Engineers

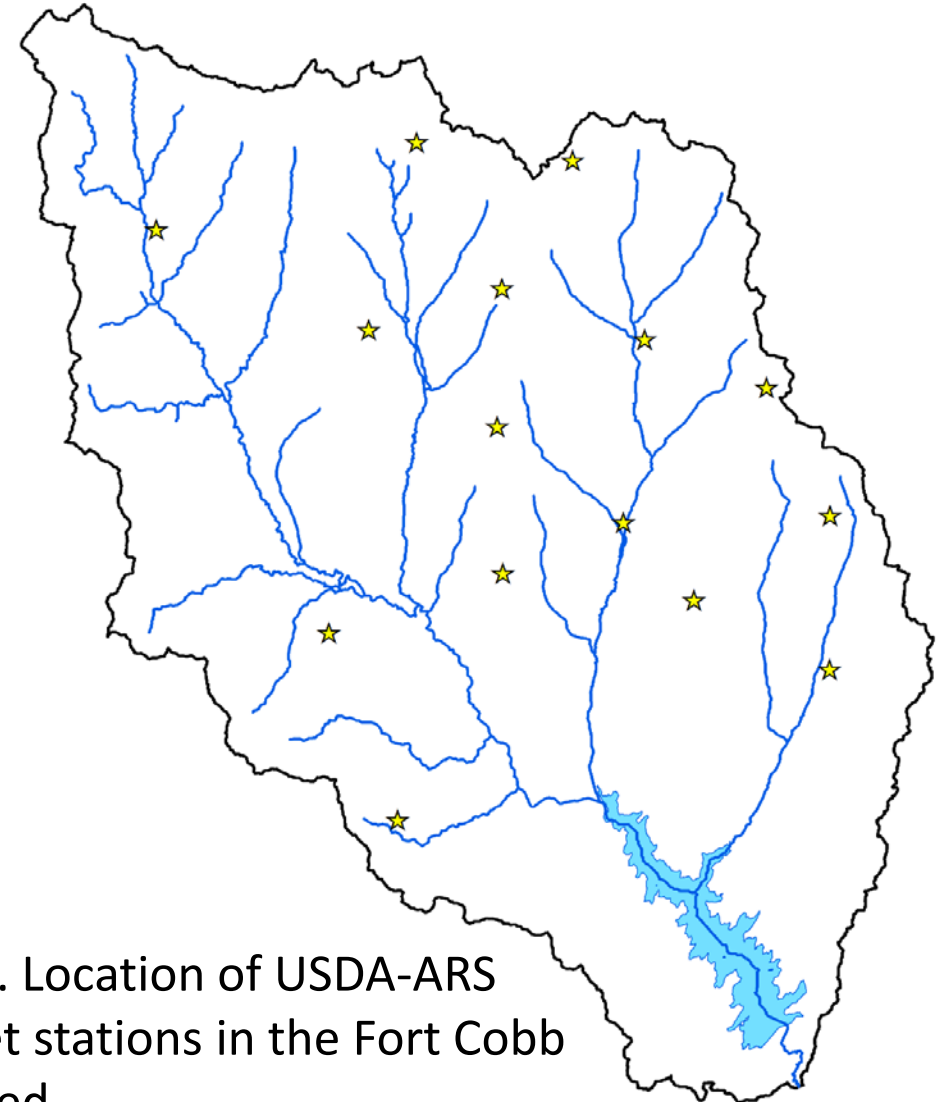


Figure 5. Location of USDA-ARS Micronet stations in the Fort Cobb watershed.

# Forecasting Model

- Scenario 1 (baseline)
  - Step 1: antecedent precipitation → April-July streamflow
- Scenario 2 (two-step)
  - Step 1: antecedent precipitation → streamflow
  - Step 2: antecedent soil moisture → residuals (observed-estimated streamflow)
  - Step 3: Step 1 streamflow + Step 2 residuals → final April-July streamflow estimate
- Water years 2006-2018
- 0-, 1-, 2-, and 3-month lead times
- Evaluation
  - root mean square error (RMSE)
  - coefficient of determination ( $R^2$ )



# Scenario 1

## Predictor

- Mean cumulative water year antecedent precipitation (mm)



## Response

- Total April-July streamflow (mm)



# Scenario 1 Results

Table 1. RMSE and R<sup>2</sup> of precipitation-based forecasts at all lead times.

<b>Lead Time (months)</b>	<b>RMSE (mm)</b>	<b>R<sup>2</sup></b>
0	18.06	0.28
1	—	—
2	—	—
3	—	—

- Only able to make forecast at 0-month lead time
- Explains very little variability in observed streamflow

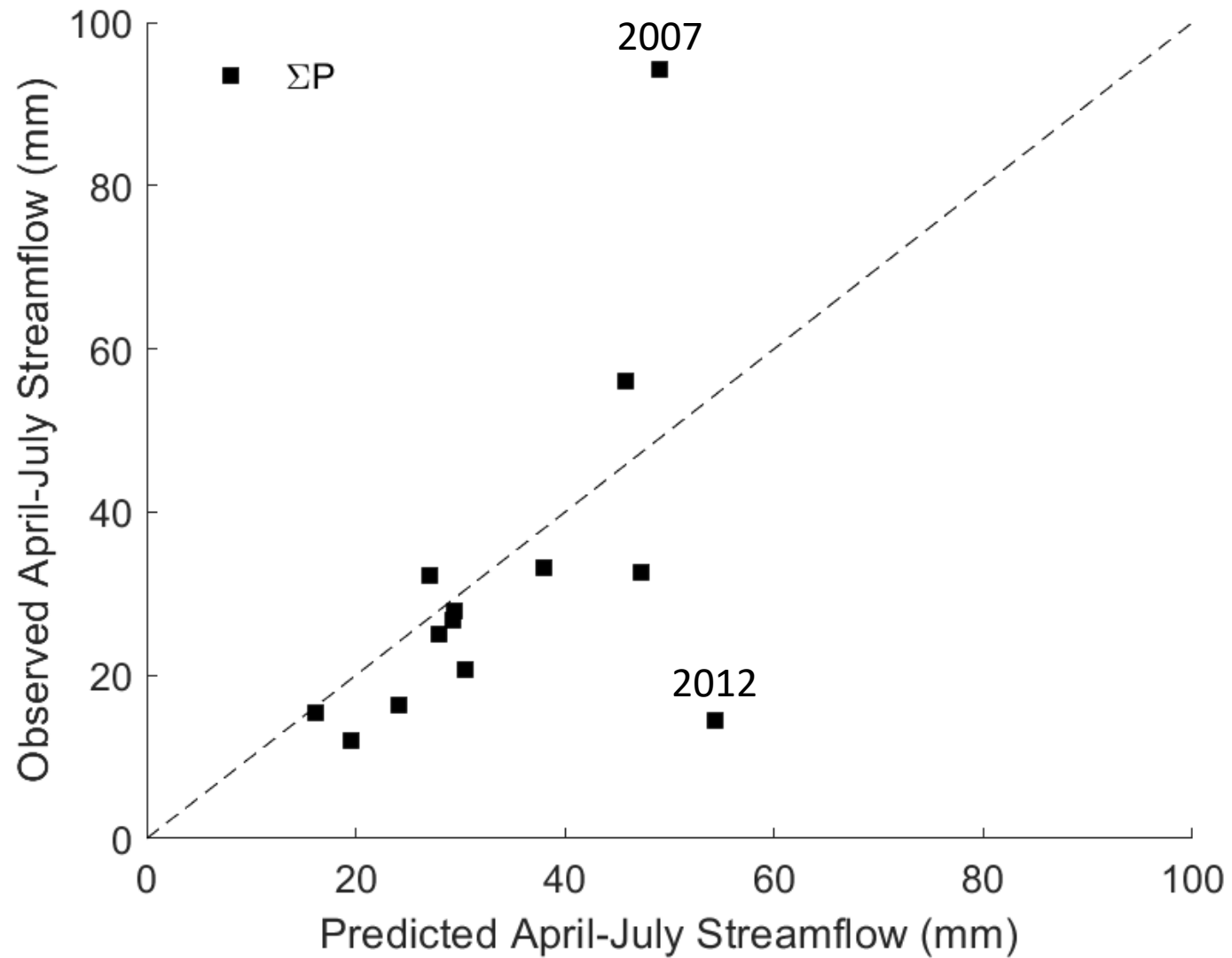
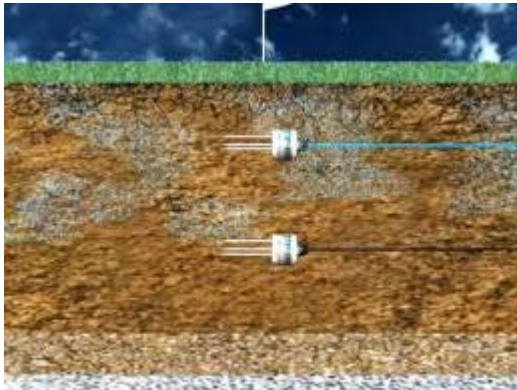


Figure 7. Observed versus predicted streamflow for baseline forecasts at 0-month lead time. Dotted line is a 1:1 line.

# Scenario 2

## Predictors

- Mean antecedent soil moisture
  - Volumetric water content ( $\text{cm}^3 \text{cm}^{-3}$ )
  - Percent saturation (%)
  - Storage (mm)
  - Available storage (mm)
  - Soil moisture index (-)




## Response

- Residuals of scenario 1  
April-July streamflow predictions (mm)



# Testing soil moisture averaging periods

Table 2. RMSE and R<sup>2</sup> values for 0-month lead time forecasts made using different soil moisture averaging periods (FD = forecast date). Baseline forecast statistics are shown in the bottom row.

<b>SM period</b>	<b>RMSE (mm)</b>	<b>R<sup>2</sup> –</b>
Apr 1	11.68	0.70
Mar	13.18	0.62
Feb-Mar	12.97	0.63
Jan-Mar	14.86	0.51
Oct-Mar	15.31	0.48
Sep-Oct	14.44	0.54
 Sep-Nov	8.42	0.84
Oct 1-FD	15.31	0.48
baseline	18.02	0.28

# Scenario 2 Results

Table 3. RMSE and R<sup>2</sup> for forecasts made using precipitation and September-November soil moisture data at all lead times.

<b>Lead Time (months)</b>	<b>RMSE (mm)</b>	<b>R<sup>2</sup> –</b>
0	8.42	0.84
1	10.66	0.75
2	11.34	0.72
3	11.93	0.69

- Highest accuracy at shortest lead time
- Accuracy decreases as lead time increases

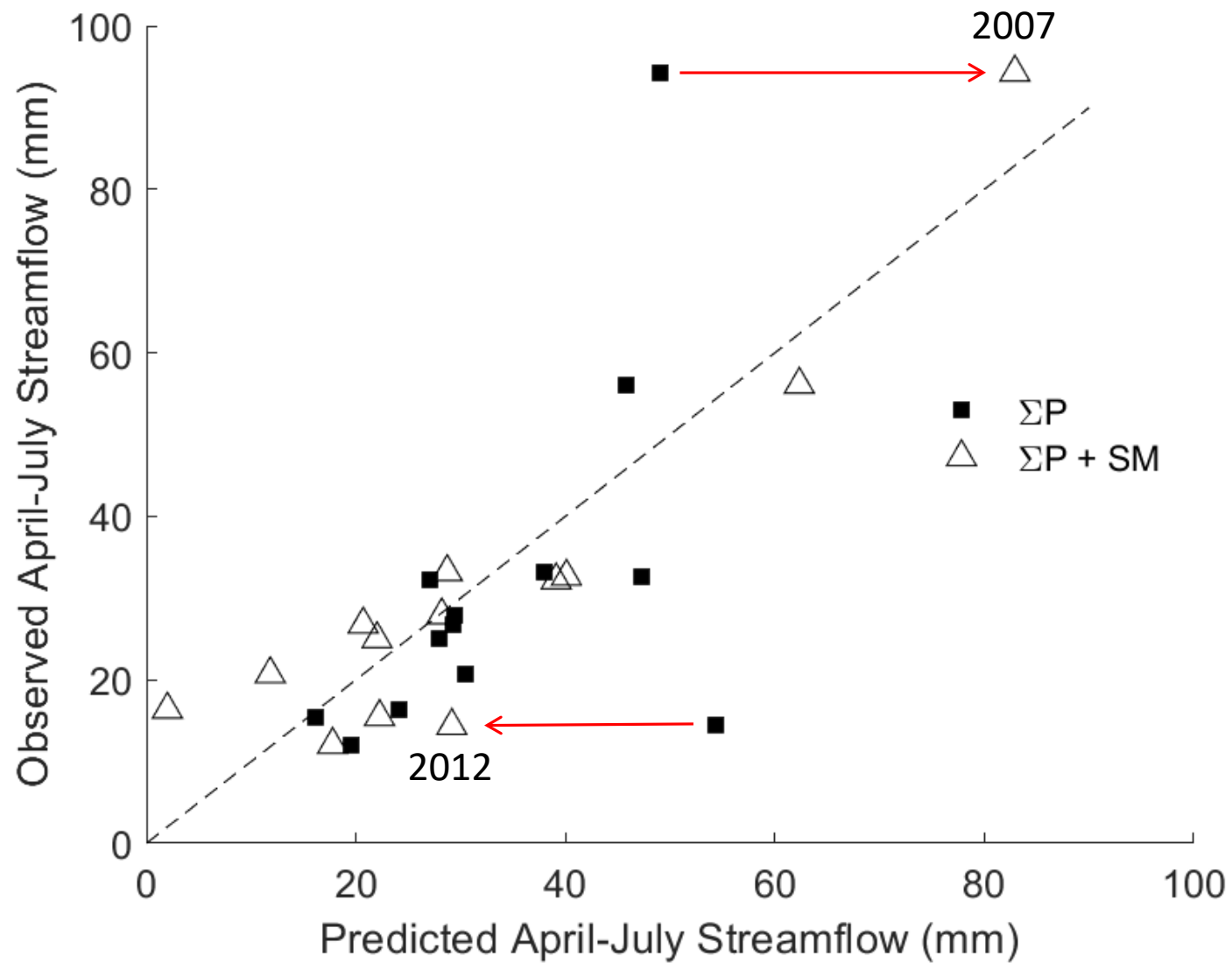


Figure 8. Observed versus predicted streamflow for baseline (black squares) and two-step (triangles) forecasts at 0-month lead time using soil moisture data from September-November of the prior year.

# Impact of soil moisture data

- Forecasts improve at all lead times
- On average, 68% more variability in streamflow explained by two-step forecasts
- Forecasts can be made up to three months in advance of target period



# Key points

- Any soil moisture data improves streamflow forecast accuracy
- Best performance at decreasing lead times
- Demonstrates the importance of long-term in-situ precipitation and soil moisture monitoring
- Strong potential for use in water resource planning and allocation

# Ongoing and future work

- Sensitivity analysis
  - Number of soil moisture monitoring locations?
- Expand to two additional watersheds
  - Little Washita, OK
  - Little River, GA
- Human influences?

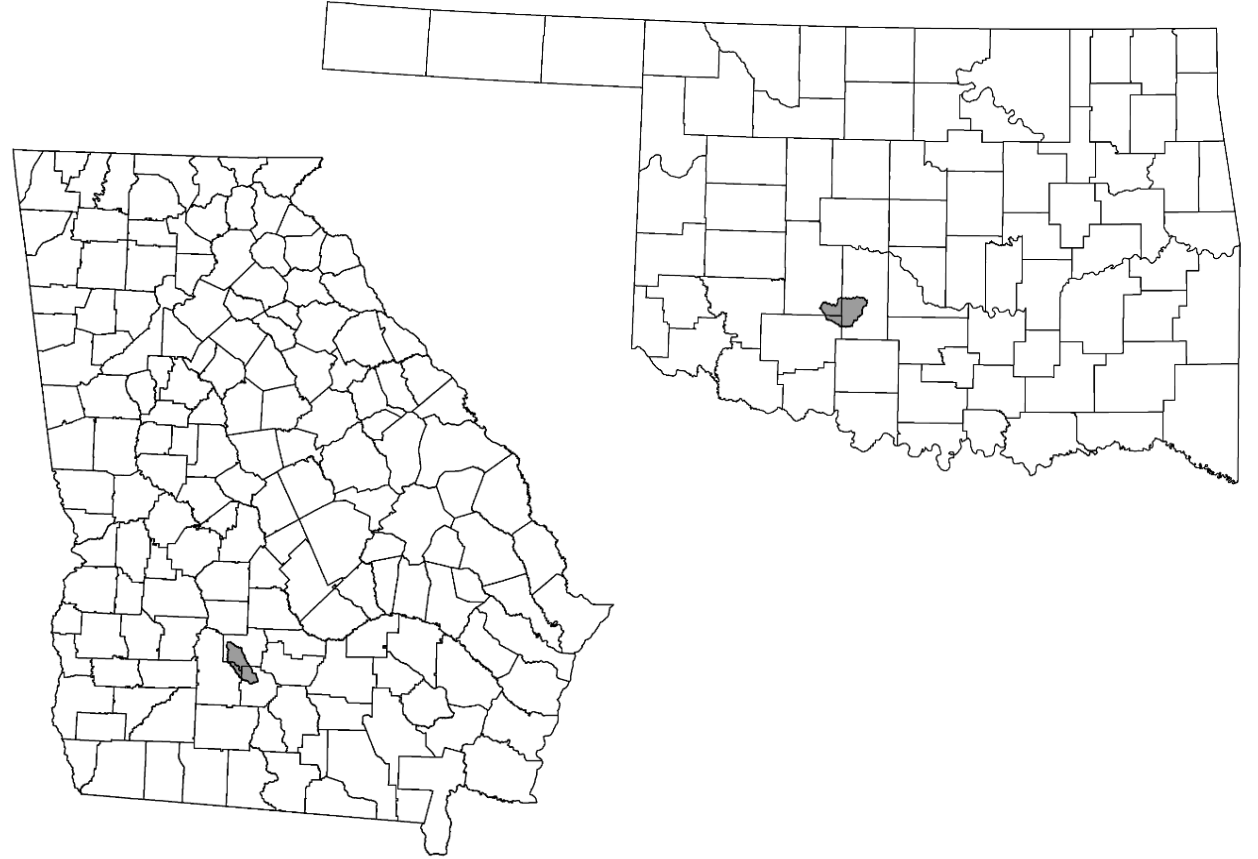


Figure 9. Locations of Little Washita, OK and Little River, GA watersheds.

# Thanks to:

Dr. Tyson Ochsner  
Dr. Phillip Alderman  
Dr. Chris Zou  
Dr. Henry Adams

Oklahoma State University soil physics group



US Army Corps  
of Engineers®



# Questions or comments?

[briana.wyatt@okstate.edu](mailto:briana.wyatt@okstate.edu)

“ ...records of soil moisture should be maintained... both because of their direct economic value and because of the need of such data as a basis for scientific researches in hydrology, particularly with reference to the solution of the rainfall-runoff problem.”

- Robert Horton, 1931



Soil  
Physics

[soilphysics.okstate.edu](http://soilphysics.okstate.edu)  
[soilmoisture.okstate.edu](http://soilmoisture.okstate.edu)

# Forecast period

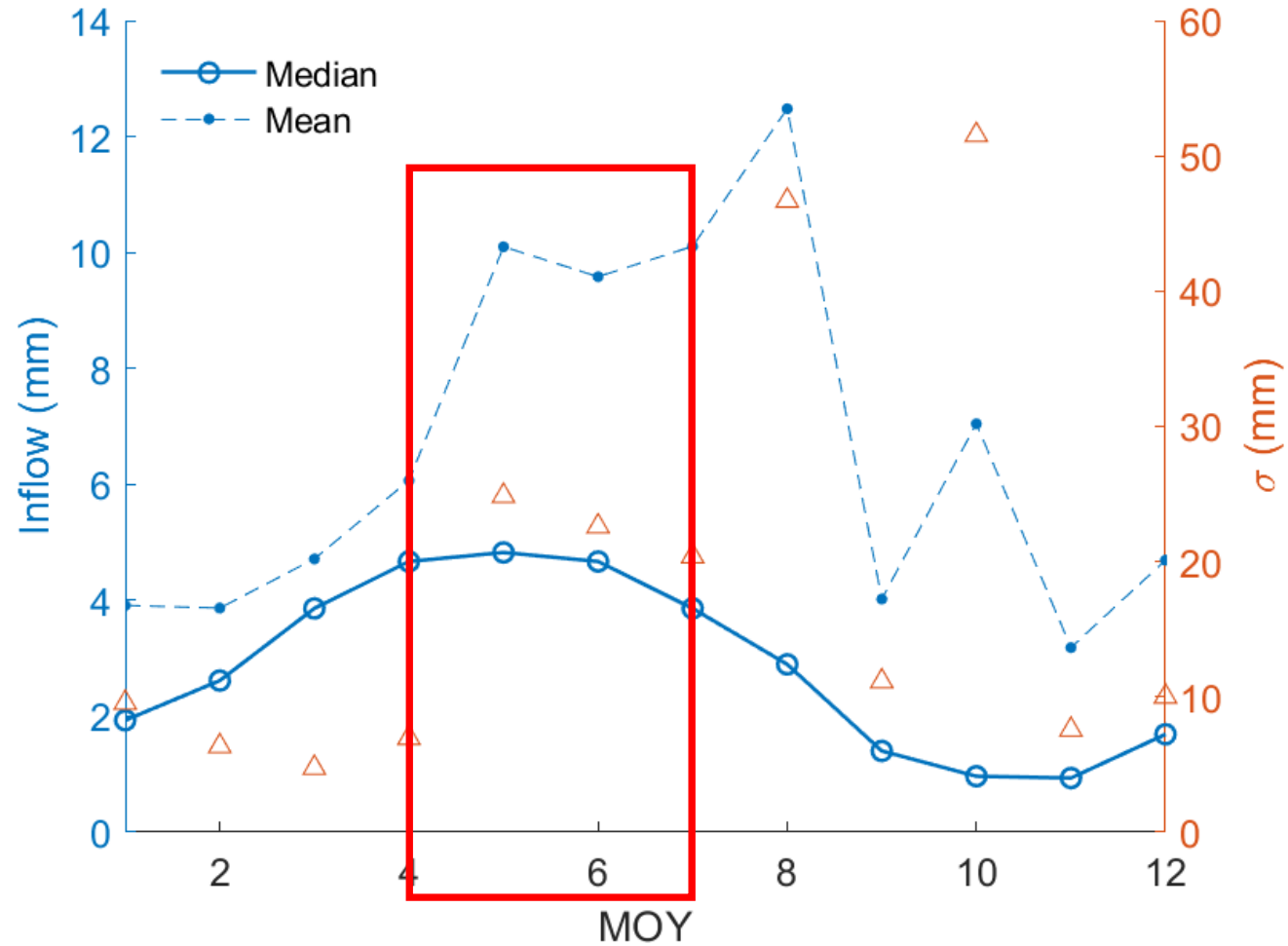


Figure 6. Median, mean, and standard deviation ( $\sigma$ ) of monthly inflow to Fort Cobb Lake versus month of year (MOY) from Nov. 1994 - July 2018.